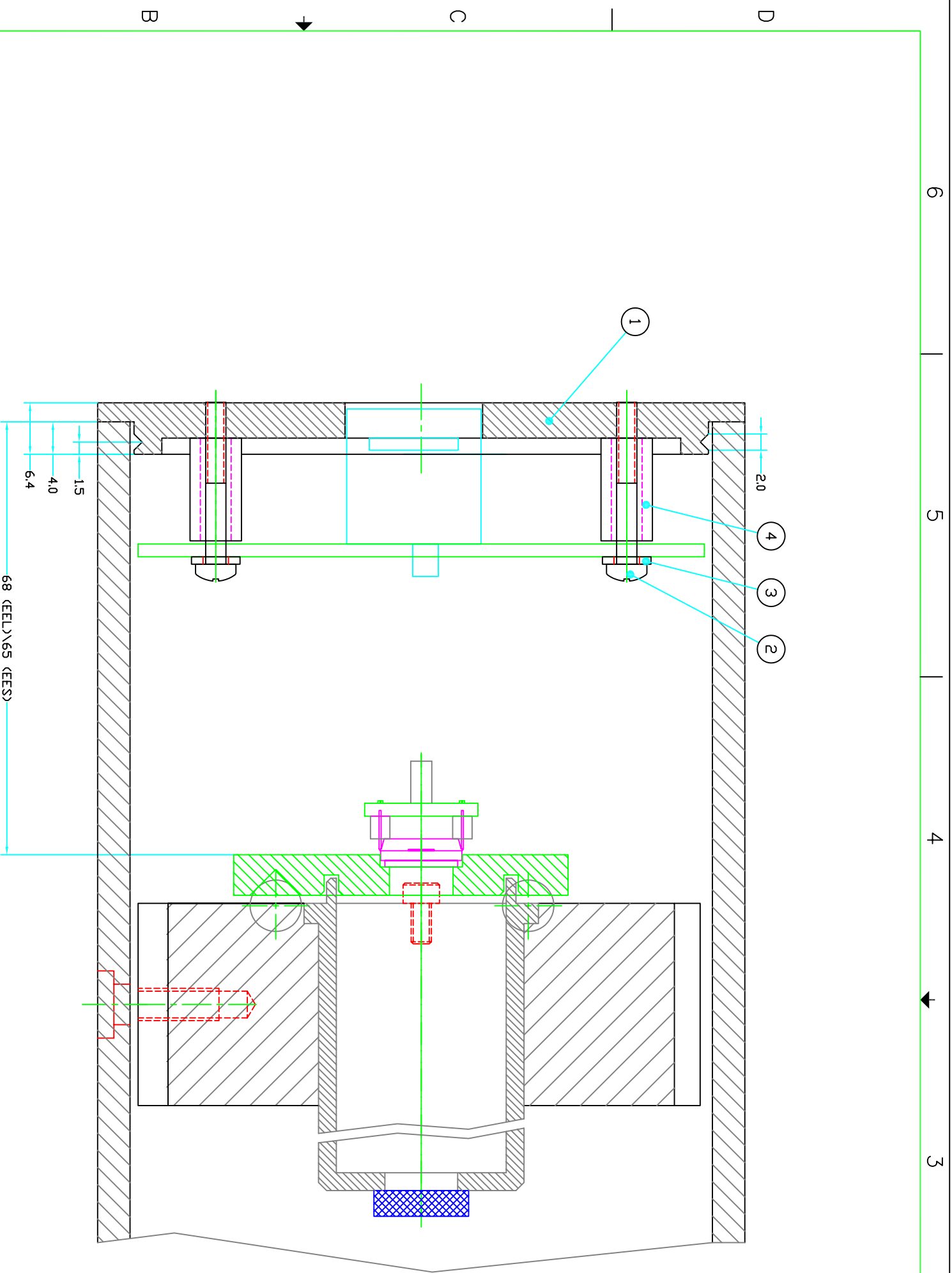


ZONE	REV	DESCRIPTION	DATE	APPROVED
1				



NOTE:
SIZES IN MM

NO	QTY	UOM	PART NAME	MATERIAL	REF. SHEET/DWG.
4	EA		STANDOFF	STL STEEL	
3	EA		WASHER	Fiberglass	
2	EA		SCREW	STL STEEL	
1	EA		END CAP	AL 6061	

PARTS LIST		PERMISSIBLE VARIATION IN INCH DIMENSIONS WITHOUT TOLERANCES	
FABRICATION TOLERANCES	MACHINING TOLERANCES		
BELOW 12	±0.10	BETWEEN PLACES X & XX	X,XXX
12 TO 60	±0.13	BELOW 18	±0.015
60 TO 180	±0.20	18 TO 48	±0.030
OVER 180	±0.30	OVER 48	±0.045
		ANGLE TOLERANCE ±0.1°	±0.015

UNLESS OTHERWISE SPECIFIED:
1. DIMENSIONS ARE IN INCHES
2. MACHINE SURFACES TO BE FLAT, SQUARE, PARALLEL & CONCENTRIC
3. WELD ALL WELDS (EXCEPT COMMERCIAL PARTS) WITH DWG.
4. BREAK ALL SHARP CORNERS 01 x 45° CHAMFER.
5. FLEETS SHOWN SHARP = .04 RAD.
6. TAPPED HOLES UNITED CLASS 2B THREAD, MIN DEPTH 1.5 x DIA.
7. CSK/BORED & REAMED HOLES 1/16 x 45°
8. COINERS PERMISSIBLE
9. ALL DIMENSIONS TO CENTER UNLESS OTHERWISE SPECIFIED
10. ALL WELDING TO CONFORM TO LATEST A.M.S. STANDARDS
SURFACE TEXTURE 125
TOLERANCES ARE NOT ACCUMULATIVE

DRAWING INFORMATION		TITLE	
NEXT ASST	QTY	NAME	DATE
		AD	06/26/08
DRAWN		CHECKED	
		JE	
APPROVED			
PROJECT NUMBER		DRAWING NUMBER	
220		220.69.03.00	
PROJECT NUMBER		SHEET	
HIGH ENERGY PHYSICS LABORATORY		1 OF 1	
ALIGNMENT INBAR (72 mm BAR ID) END CAP 72 ASSEMBLY		REVISION	
		A	

ATLAS - BMC
BRANDEIS

SIZE D
SCALE 4/1

