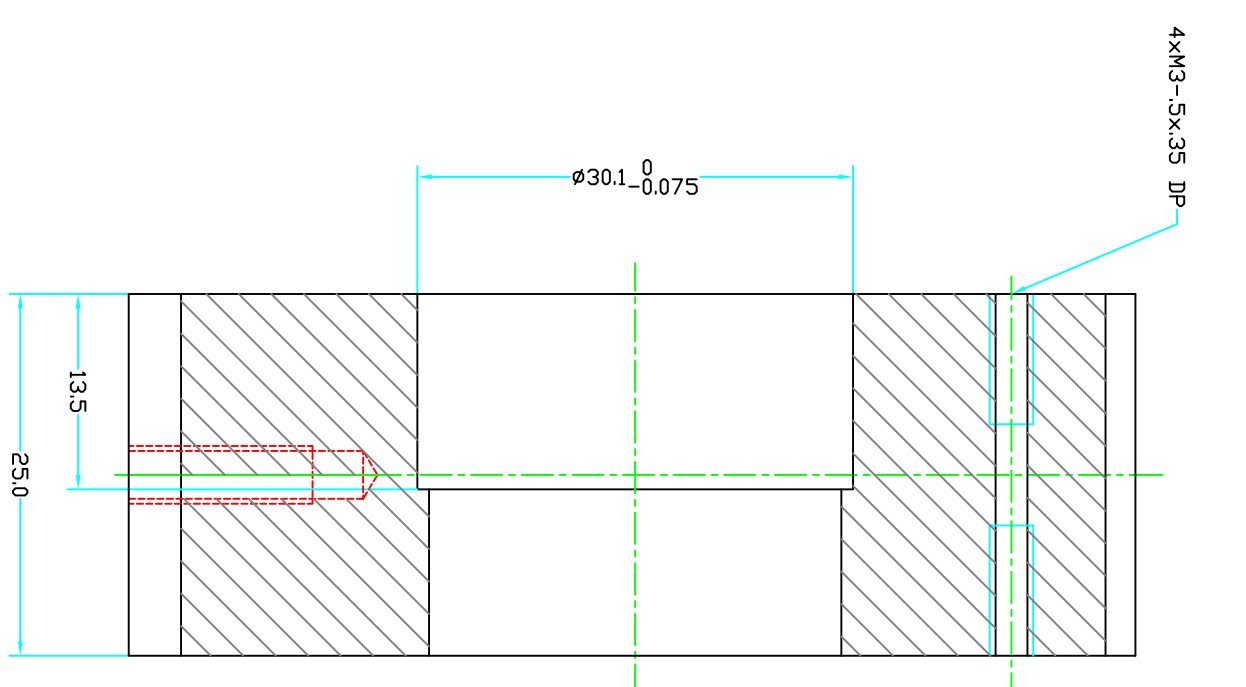


ZONE	REV	DESCRIPTION	DATE	APPROVED



SECTION A-A

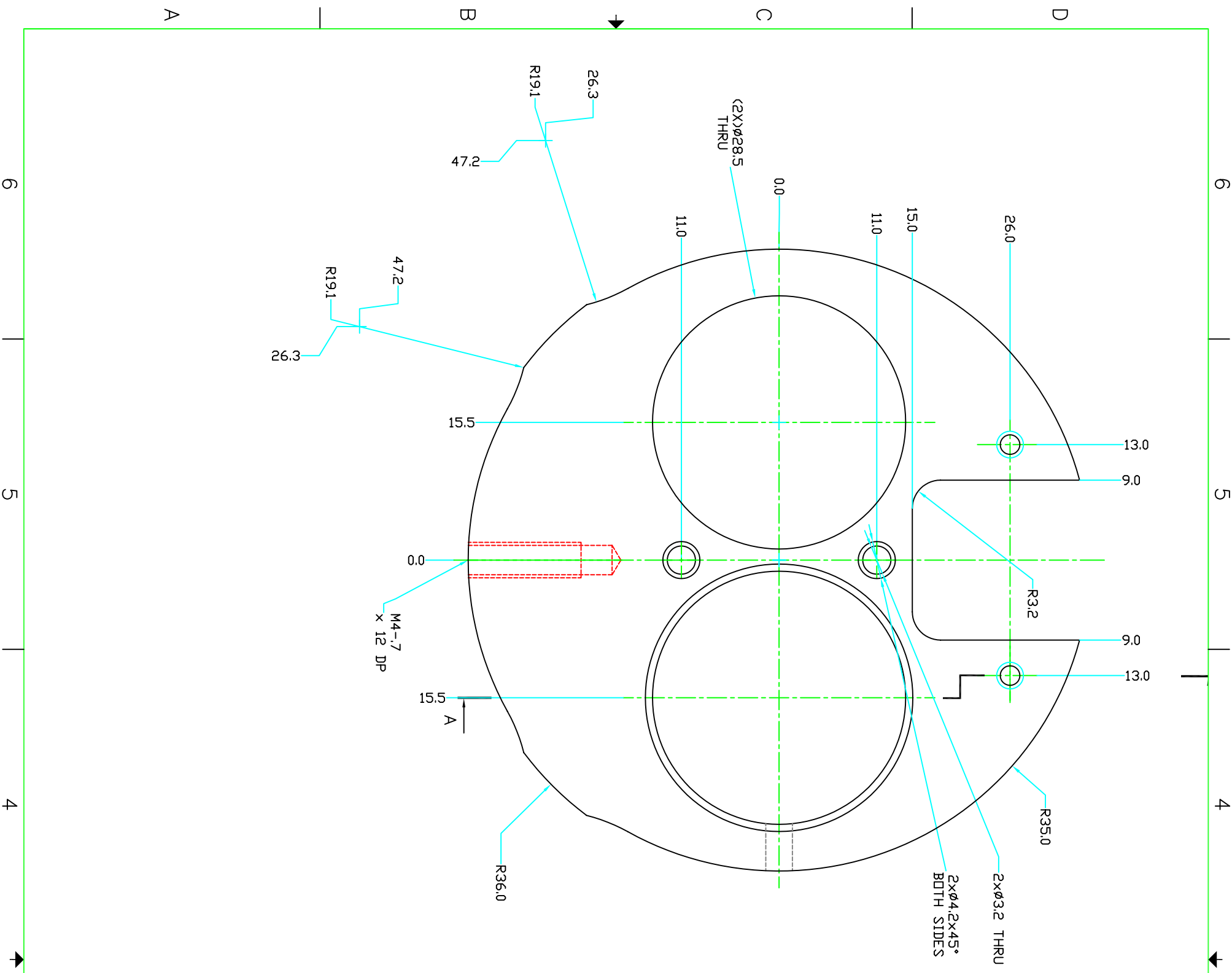


FIG./REF.#	QTY.	U.M.	PART NAME	MATERIAL	REF. SHEET/DWG.
EA	DISC	AL 6061			

PARTS LIST			
DIMEN	TOLER	ANGLE	SURFACE TEXTURE
< 3	±0.05	±30°	12.5
3-6	±0.06	±30°	12.5
6-10	±0.075	±30°	12.5
10-18	±0.09	±30°	12.5
18-30	±0.105	±30°	12.5
30-50	±0.125	±30°	12.5
50-80	±0.15	±30°	12.5
80-120	±0.175	±30°	12.5
120-180	±0.20	±30°	12.5
180-250	±0.23	±30°	12.5
250-300	±0.26	±30°	12.5
300-400	±0.285	±30°	12.5
400-500	±0.315	±30°	12.5
500-600	±0.35	±30°	12.5
600-800	±0.40	±30°	12.5
800-1000	±0.45	±30°	12.5

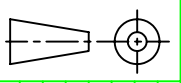
UNLESS OTHERWISE SPECIFIED:
1. DIMENSIONS ARE IN MM.
2. MACHINE SURFACES TO BE FLAT, SQUARE, PARALLEL, & CONCENTRIC WITHIN .020 FOR 100 MM OR .020 TIR AS APPLICABLE.
3. MARK ALL DETAILS (EXCEPT COMMERCIAL PARTS) WITH DIM., & ITEM NUMBER.
4. HITCHES SHOULD BE CONFORM TO LATEST A.M.S. STANDARDS.
5. TAPPED HOLES: MIN DEPTH 2.0 x DIA.
6. CHAMFERED & REAMED HOLES 1.5 x 45°.
7. CENTERS PERMISSIBLE.
8. DO NOT SCALE DRAWING.
9. ALL WELDING TO CONFORM TO LATEST A.M.S. STANDARDS.
10. ALL WELDING TO CONFORM TO LATEST A.M.S. STANDARDS.

DATE	NAME	QTY	DRAWING INFORMATION
06/26/08	Andrei	18	APPROVED

TITLE	PROJECT NUMBER	SIZE	SCALE
ALIGNMENT INBAR (72 MM BAR ID) LENSE DISK	220	D	5/1

PROJECT NUMBER	DRAWING NUMBER	SHEET	REVISION
220	220.69.01.01	1 OF 1	A

ATLAS - BMC
BRANDEIS



SURFACE TEXTURE 12.5

TOLERANCES ARE NOT ACCUMULATIVE