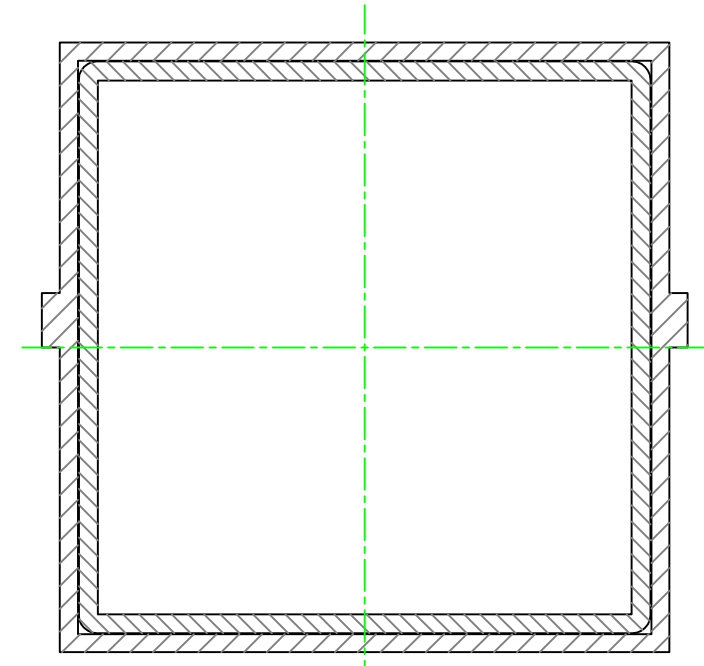
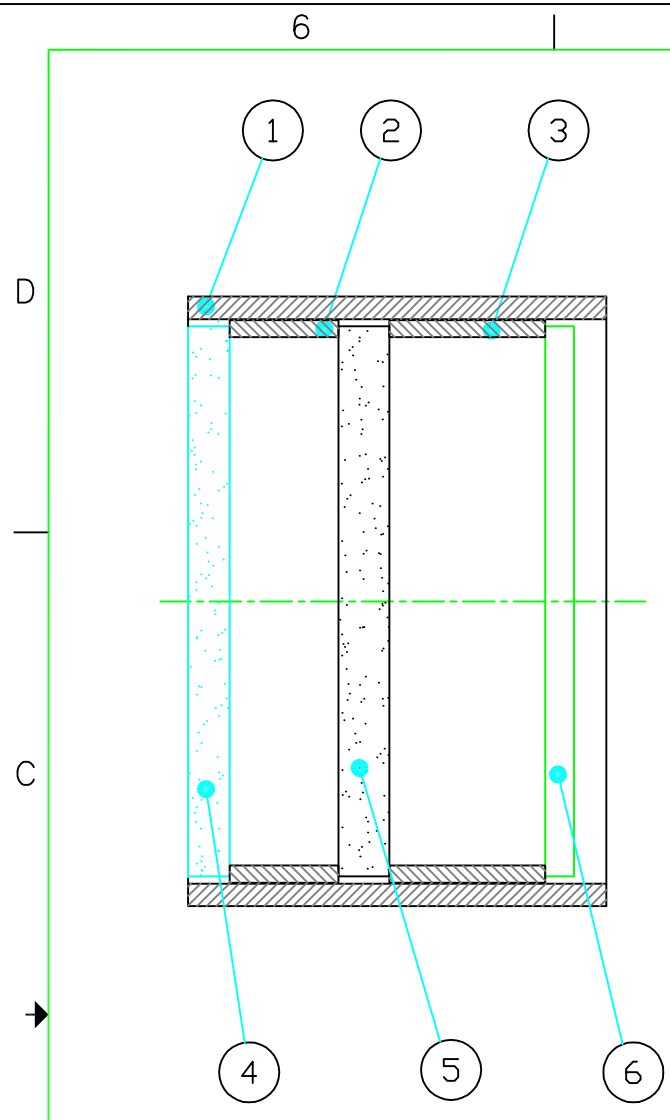
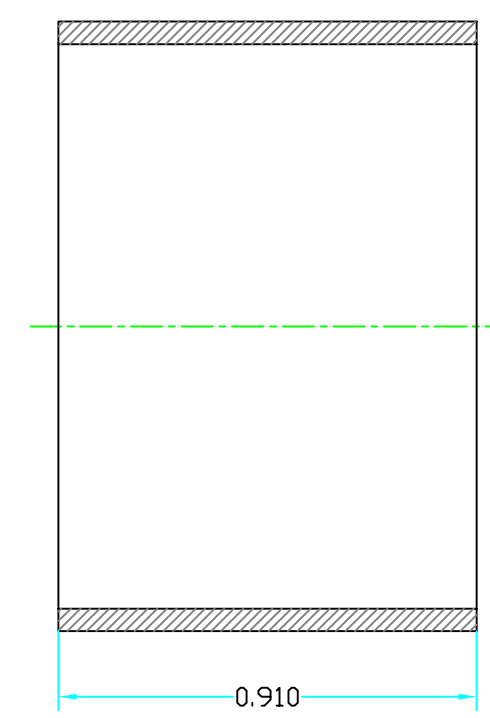


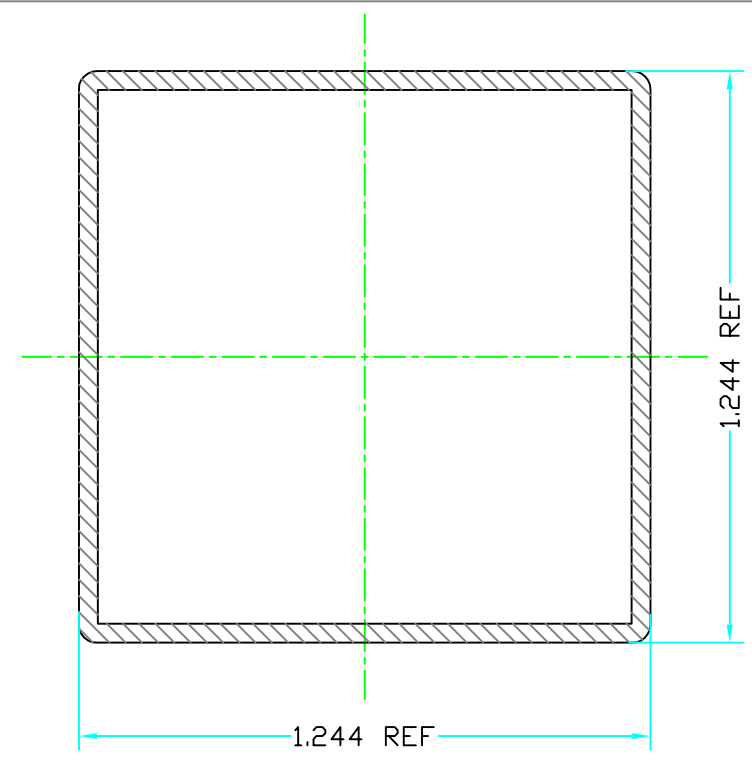
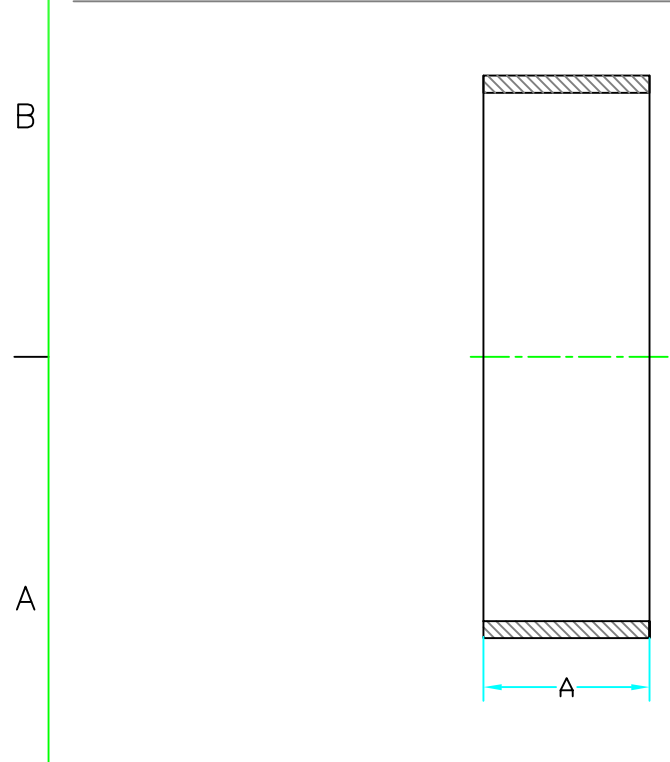
ZONE		REV	DESCRIPTION	DATE	APPROVED
B			ADDED DWG #'s	09/29/03	J.B./N.S.



NOTE:
THE PARTS HAVE TO BE GLUED TOGETHER.



① CASE



POS	A"
②	0.236
③	0.339

② ③ SPACER

FIND/REF.#	QTY.	U.M.	PART NAME	MATERIAL	PART DESCRIPTION	REF. SHEET/DWG.
6	1	EA	circuit plate		CURCUIT PLATE A2041-P1	
5	1	EA	diffuser		30 x30 x 2.8 mm	
4	1	EA	MASK		30 x30 x 2.3 mm	
3	1	EA	SPACER	AL	EXTRUSION SHAPE	220.59.03
2	1	EA	SPACER	AL	EXTRUSION SHAPE	220.59.02
1	1	EA	CASE	AL	EXTRUSION SHAPE	220.59.01

UNLESS OTHERWISE SPECIFIED:		PERMISSIBLE VARIATION IN INCH DIMENSIONS WITHOUT TOLERANCES			
		FABRICATION TOLERANCES		MACHINING TOLERANCES	
1. DIMENSIONS ARE IN INCHES.		BELOW 12	±0.10	DECIMAL PLACES X & X.X	X.XX X.XXX
2. MACHINE SURFACES TO BE FLAT, SQUARE, PARALLEL & CONCENTRIC WITHIN .001 FOR 5 INCHES OR .001 TIR AS APPLICABLE.		12 TO 60	±0.13	BELOW 18	±0.015 ±0.010 ±0.005
3. MARK ALL DETAILS (EXCEPT COMMERCIAL PARTS) WITH DWG. & ITEM NUMBER.		60 TO 180	±0.20	18 TO 48	±0.030 ±0.020 ±0.010
4. BREAK ALL SHARP CORNERS .01 x 45° CHAMFER.		OVER 180	±0.30	OVER 48	±0.045 ±0.030 ±0.015
5. FILLETS SHOWN SHARP = .04 RAD.		ANGLE TOLERANCE ±0.5°			
6. TAPPED HOLES: UNIFIED CLASS 2B THREAD, MIN DEPTH 1.5 x DIA.		ANGLE TOLERANCE ±0.1°			
7. C'SINK BORED & REAMED HOLES 1/16 x 45°.		SURFACE TEXTURE 125			
8. CENTERS PERMISSIBLE.		TOLERANCES ARE NOT ACCUMULATIVE			
9. DO NOT SCALE DRAWING.					
10. ALL WELDING TO CONFORM TO LATEST A.W.S. STANDARDS					

NEXT ASSY	QTY	DRAWING INFORMATION	SIZE	SCALE
		NAME DATE	D	5/1
		DRAWN N.S. 08/12/02	PROJECT NUMBER	
		CHECKED H.W. 08/12/02	220	
		APPROVED	DRAWING NUMBER	
		HIGH ENERGY PHYSICS LABORATORY	220.59.00	
		TITLE ALIGNMENT INBAR MASK CASE	SHEET	REVISION
			1 OF 1	B