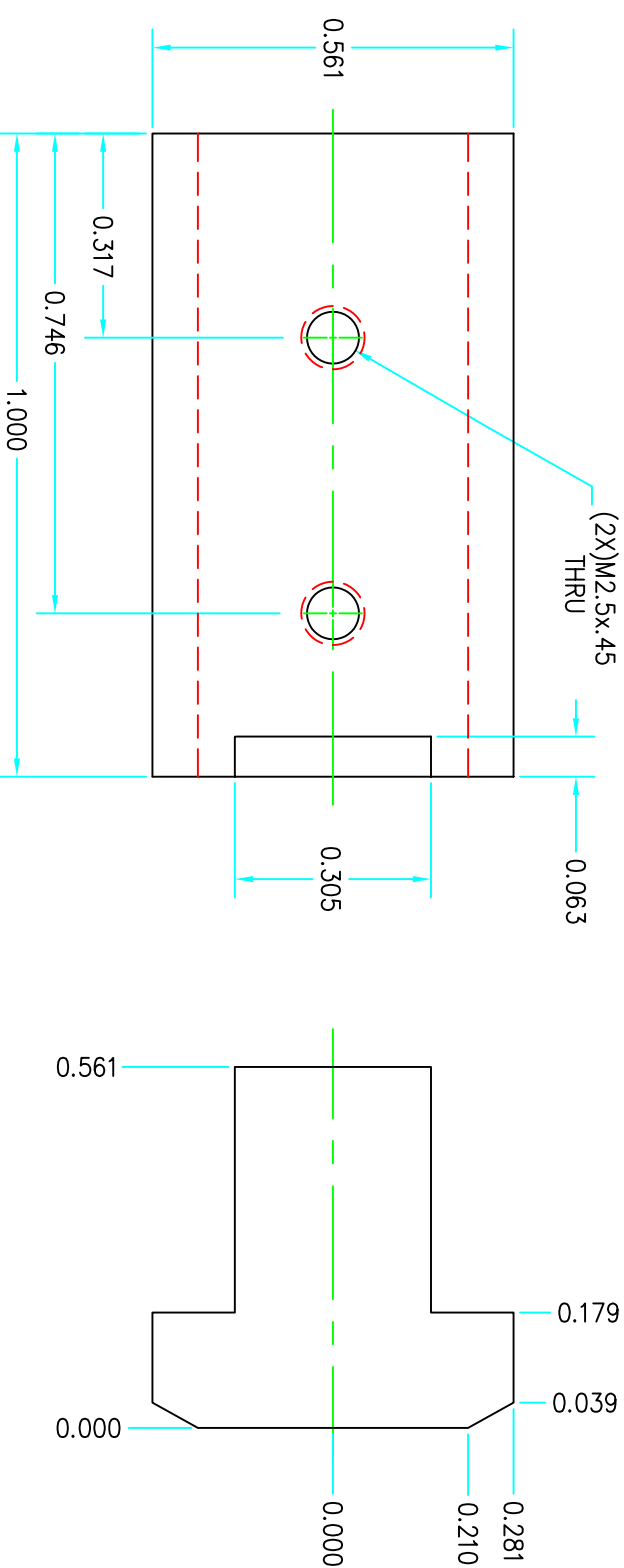
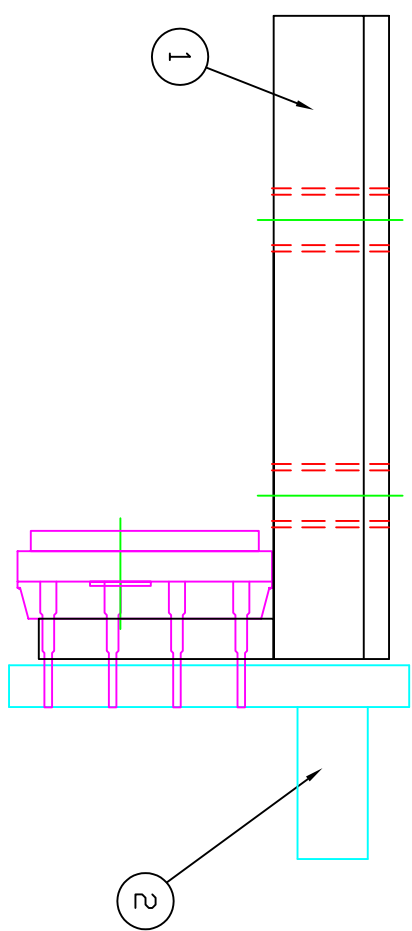


ZONE	REV	REVISION	DATE	APPROVED
B		CHANGED DESIGN	11/07/01	AN/HW
C		ADDED CHAMFERS	03/18/03	NS./J.B.



QTY for ATLAS: 1200 pcs

PNO/REF #	QTY	UOM	PART NAME	MATERIAL	REF. SHEET/DWG.
2	1	EA	COU	AL 6061	42-06-01-01
1	1	EA	BRACKET	AL 6061	

UNLESS OTHERWISE SPECIFIED:			
PARTS LIST			
PERMISSIBLE VARIATION IN INCH DIMENSIONS WITHOUT TOLERANCES		MACHINING TOLERANCES	
BELOW 12	±0.10	DECIMAL PLACES X & XX	X,XXX
12 TO 60	±0.13	BELOW 18	±0.015
60 TO 180	±0.20	18 TO 48	±0.020
180 TO 300	±0.30	OVER 48	±0.045
OVER 300	±0.50	ANGLE TOLERANCE ±0.1°	±0.015

- DIMENSIONS ARE IN INCHES.
- MACHINING SURFACES TO BE FLAT, SQUARE, PARALLEL, & CONCENTRIC WITHIN .001 FOR 5 INCHES OR .001 TIR AS APPLICABLE.
- MARK ALL DETAILS (EXCEPT COMMERCIAL PARTS) WITH DIM. & TIDM NUMBER.
- ALL CORNERS .01" x 45° CHAMFER.
- RILETS SHOWN SHARP UNLESS NOTED OTHERWISE.
- TAPPED HOLES: UNIFIED CLASS 2B THREAD, MIN DEPTH 1.5 x DIA.
- CHAMK BORED & REAMED HOLES 1/16" x 45°.
- CENTERS PERMISSIBLE.
- DO NOT SCALE DRAWING.
- ALL WELDING TO CONFORM TO LATEST AWS STANDARDS.

DATE	BY	DESCRIPTION
11/07/01	ANDREY	DRAWN
11/07/01	J. EB	CHECKED

DRAWING INFORMATION		SIZE	SCALE
DATE	11/07/01	D	5/1
NAME	ANDREY	PROJECT NUMBER	42
DRAWN	ANDREY	DRAWING NUMBER	42.06.01.00
CHECKED	J. EB	SHEET	1 OF 1
APPROVED		REVISION	C

ATLAS - BMC  
BRANDEIS UNIVERSITY

ALIGNMENT  
PROXY CAMERA  
COU BRACKET ASSEMBLY

6 5 4 3 2 1