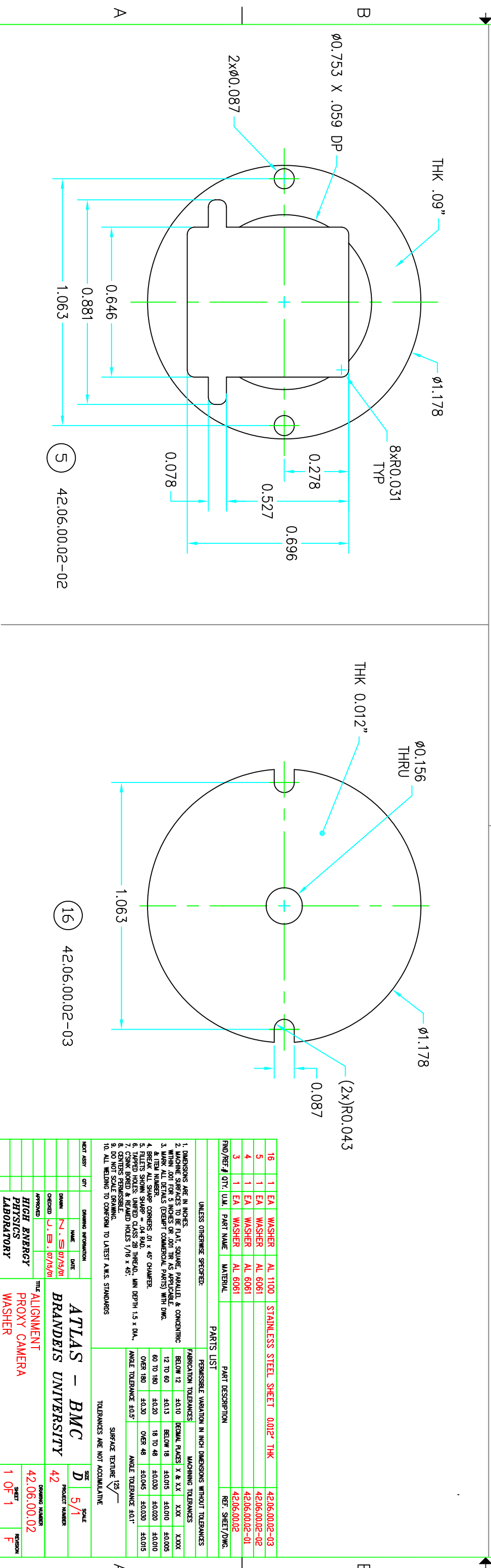
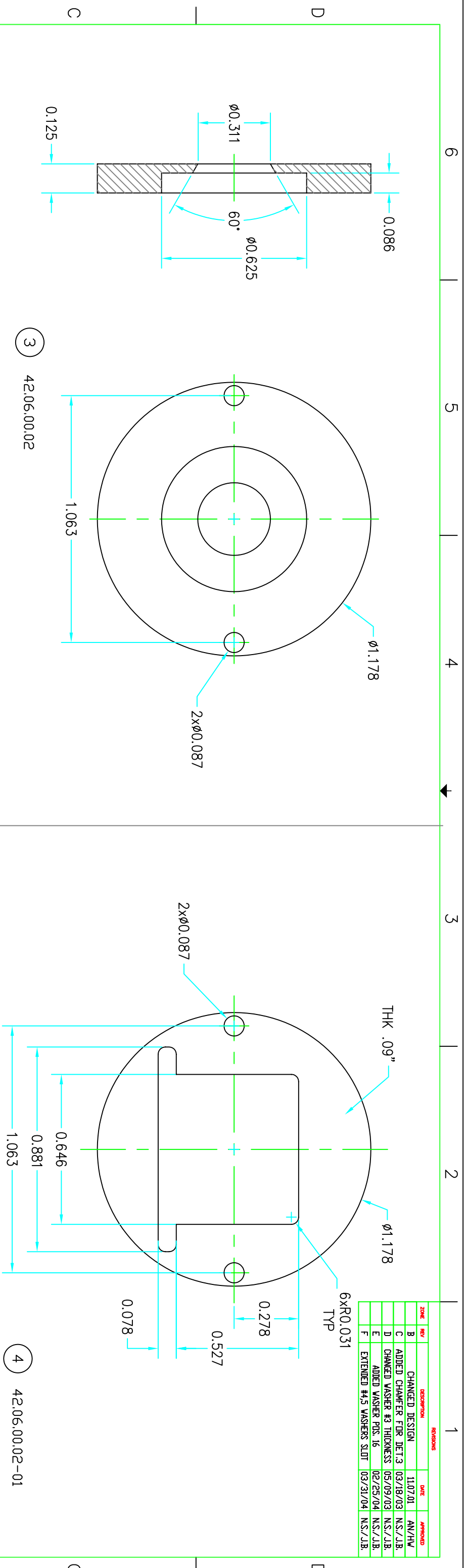


ZONE	REV	REVISION	DATE	APPROVED
B		CHANGED DESIGN	11/07/01	AN/HW
C		ADDED CHAMFER FOR DET.3	03/18/03	NS./J.B.
D		CHANGED WASHER #3 THICKNESS	05/09/03	NS./J.B.
E		ADDED WASHER POS. 16	02/25/04	NS./J.B.
F		EXTENDED #4.5 WASHERS SLIT	03/31/04	NS./J.B.



QTY	DESCRIPTION	MATERIAL	THICKNESS	PART NUMBER
16	1 EA WASHER	AL 1100	0.012" THK	42.06.00.02-03
5	1 EA WASHER	AL 6061		42.06.00.02-02
4	1 EA WASHER	AL 6061		42.06.00.02-01
3	1 EA WASHER	AL 6061		42.06.00.02

PARTS LIST		PERMISSIBLE VARIATION IN INCH DIMENSIONS WITHOUT TOLERANCES	
FABRICATION TOLERANCES	MACHINING TOLERANCES	BELOW 12	XX
12 TO 60	BELOW 18	60 TO 180	XX
60 TO 180	18 TO 48	OVER 180	XX
OVER 180	OVER 48		

UNLESS OTHERWISE SPECIFIED:	
1. DIMENSIONS ARE IN INCHES.	
2. MACHINING SURFACES TO BE FLAT, SQUARE, PARALLEL & CONCENTRIC WITHIN .001 FOR 5 INCHES OR .001 TIR AS APPLICABLE.	
3. MARK ALL DETAILS (EXCEPT COMMERCIAL PARTS) WITH DIM. & ITEM NUMBER.	
4. RADIUS CORNERS .01" x 45° CHAMFER.	
5. FILLETS SHOWN SHARP UNLESS NOTED.	
6. TAPPED HOLES UNLESS CLASS 2B THREAD, MIN DEPTH 1.5 x DIA.	
7. CHAMFERED & REAMER HOLES 1/16" x 45°.	
8. CENTERS PERMISSIBLE.	
9. DO NOT SCALE DRAWING.	
10. ALL WELDING TO CONFORM TO LATEST A.M.S. STANDARDS.	

DATE	BY	CHKD	APP'D	TITLE
07/15/01	N.S.	J.E.		ALIGNMENT PROXY CAMERA WASHER
07/15/01				

ATLAS - BMC		BRANDEIS UNIVERSITY	
PROJECT NUMBER	42	DRAWING NUMBER	42.06.00.02
SHEET	1 OF 1	REVISION	F