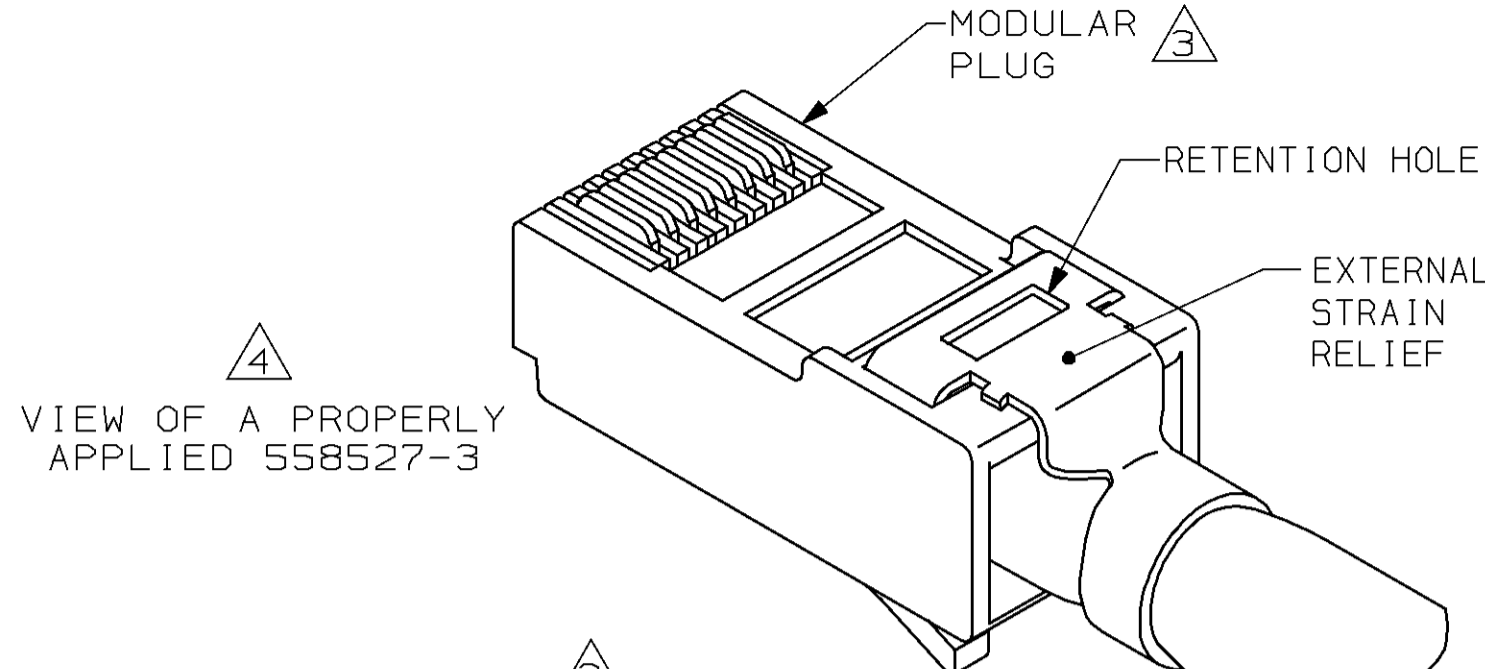
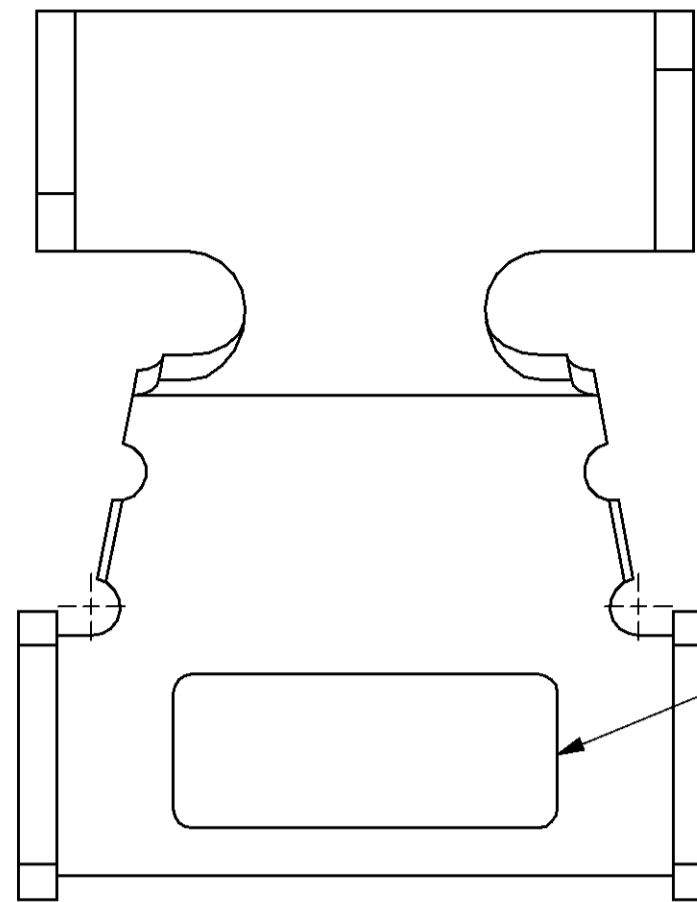
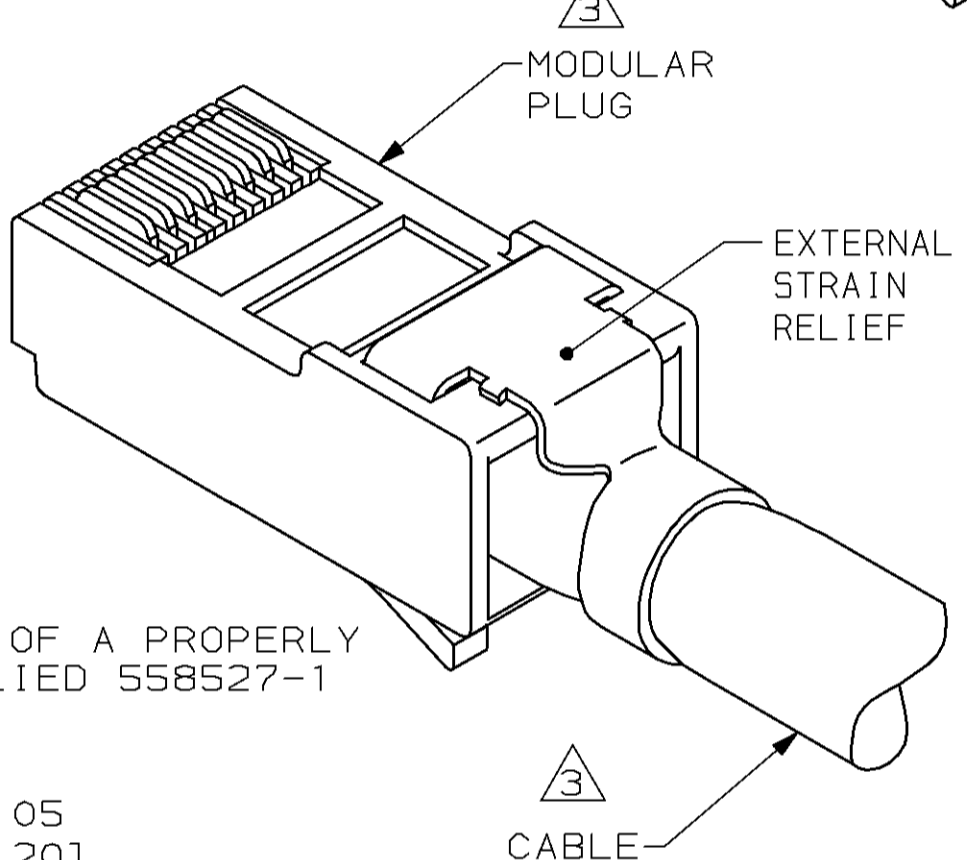


THIS DRAWING IS UNPUBLISHED. RELEASED FOR PUBLICATION
 © COPYRIGHT 19 BY AMP INCORPORATED. ALL RIGHTS RESERVED.

LOC	DIST	REVISIONS					
AA	22	P	LTR	DESCRIPTION	DATE	DWN	APVD
		C		REV; EC 0210-0543-96	03JUL96	DS	DA

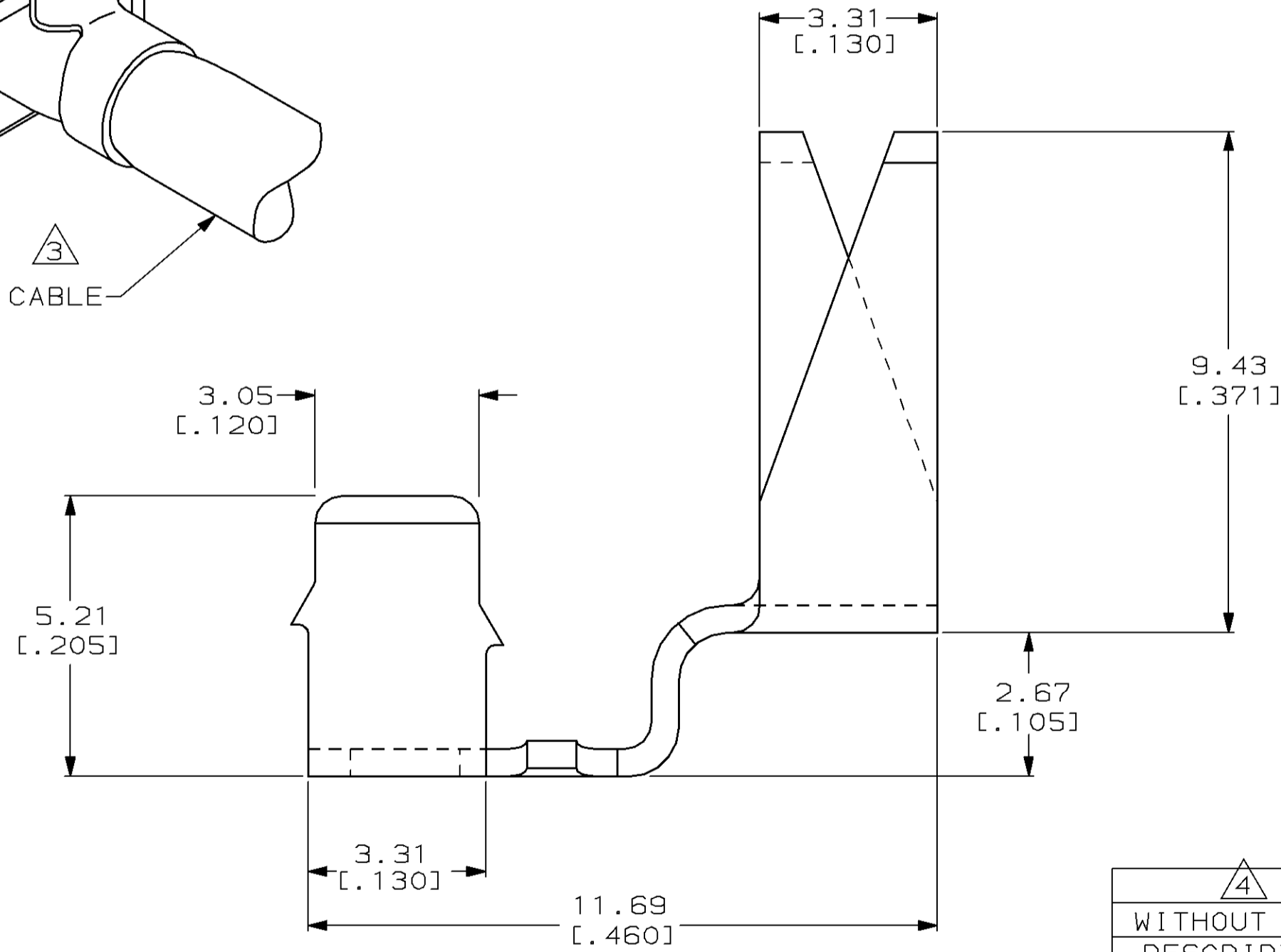
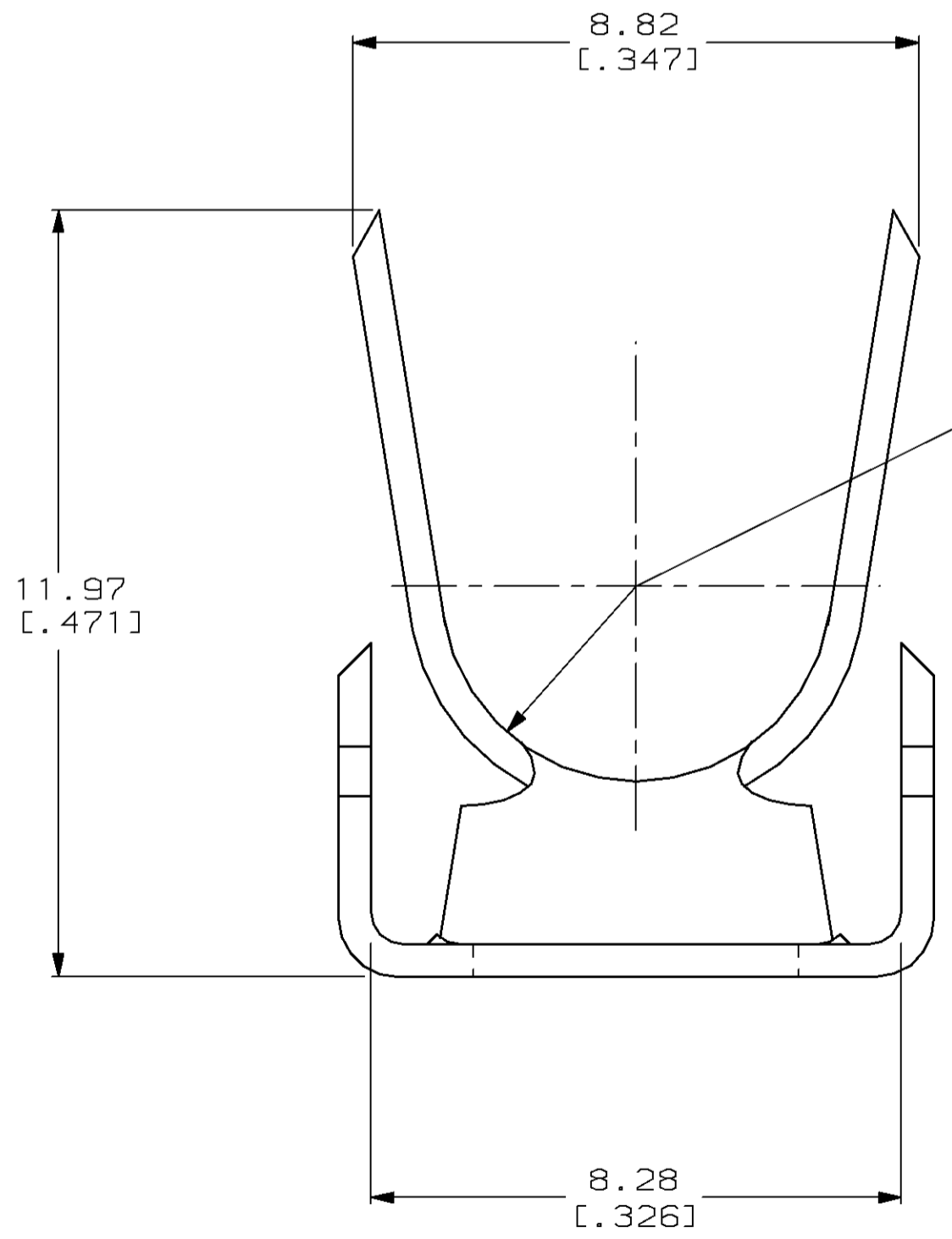


- ① ALL DIMENSIONS ARE MAXIMUM UNLESS OTHERWISE SPECIFIED.
- ② MATERIAL: TIN PLATED BRASS
- ③ MODULAR PLUG AND CABLE FURNISHED BY CUSTOMER.
- ④ 558527-3 HAS A 2.03 X 5.08 [.080 X .200] RECTANGULAR HOLE FOR RETENTION OF AMP MODULAR PLUG BOOT.



④ VIEW OF A PROPERLY APPLIED 558527-3

④ VIEW OF A PROPERLY APPLIED 558527-1



④	558527-3
WITHOUT HOLE	558527-1
DESCRIPTION	PART NO.

<small>THIS DRAWING IS A CONTROLLED DOCUMENT FOR AMP INCORPORATED. IT IS SUBJECT TO CHANGE AND THE CONTROLLING ENGINEERING ORGANIZATION SHOULD BE CONTACTED FOR THE LATEST REVISION.</small>		DWN G. GARRETT 9-20-95	AMP Incorporated Harrisburg, PA 17105-3608
DIMENSIONS: mm [INCHES]		CHK C. WHITT 10-5-95	
TOLERANCES UNLESS OTHERWISE SPECIFIED: 0 PLC ± 1 PLC ± 2 PLC ± 3 PLC ± 4 PLC ± ANGLES ± FINISH		APVD E. LAURER 10-12-95	
MATERIAL		NAME E. LAURER PRODUCT SPEC N/A APPLICATION SPEC 408-4167 WEIGHT .615 grams CUSTOMER DRAWING	
STRAIN RELIEF, EXTERNAL, MODULAR PLUG, 8 OR 10 POSITION		SIZE A2 CAGE CODE 00779 DRAWING NO C-558527	SCALE 10:1 SHEET 1 OF 1 REV C

558527